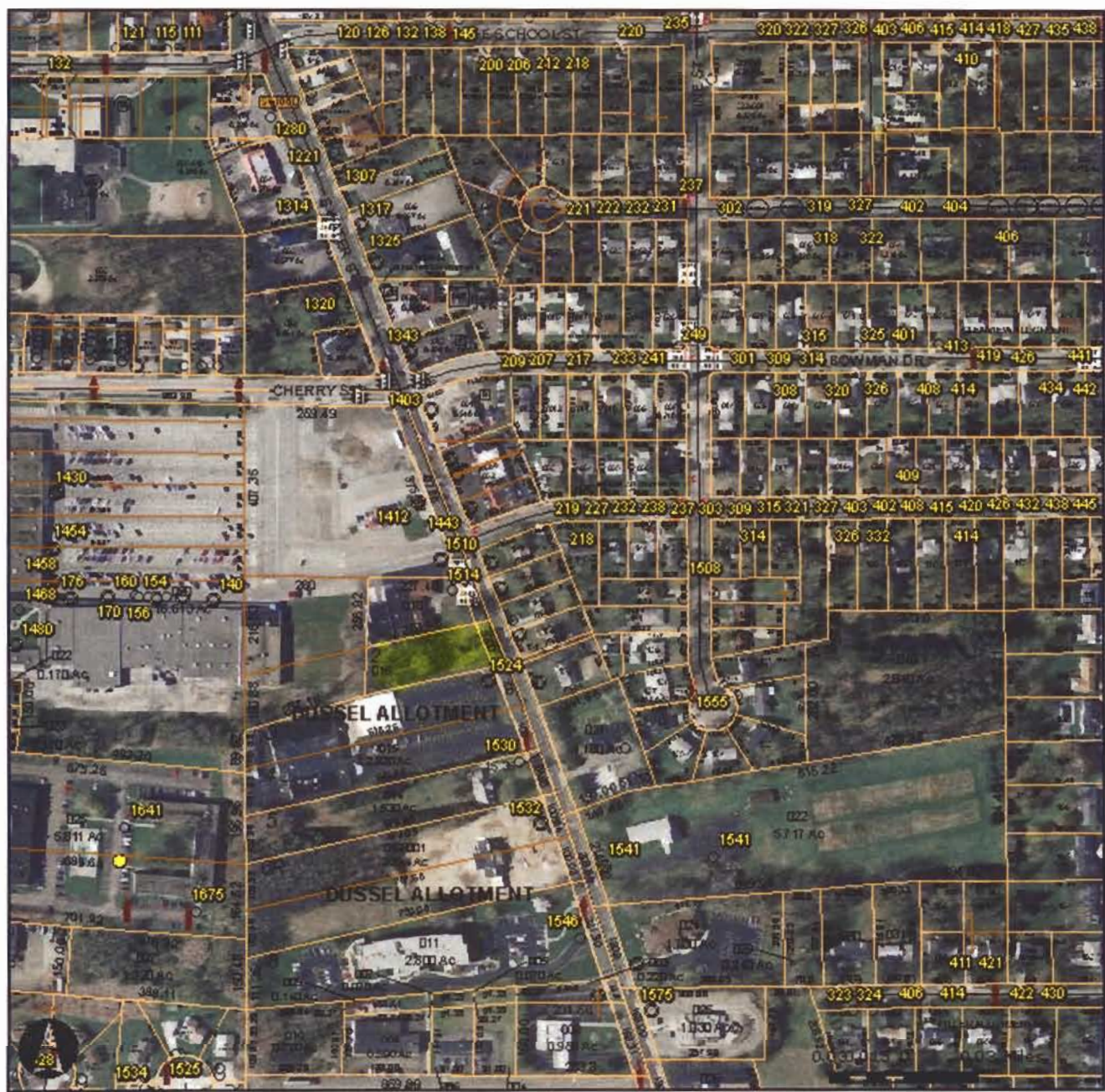


# Map



Miscellaneous Parcel Lines



Tax Parcels



Streets



Traffic Signals



Stop Signs

Speed Limits



School Zones



Flashing Signals



Railroad Crossings



Fire Hydrants

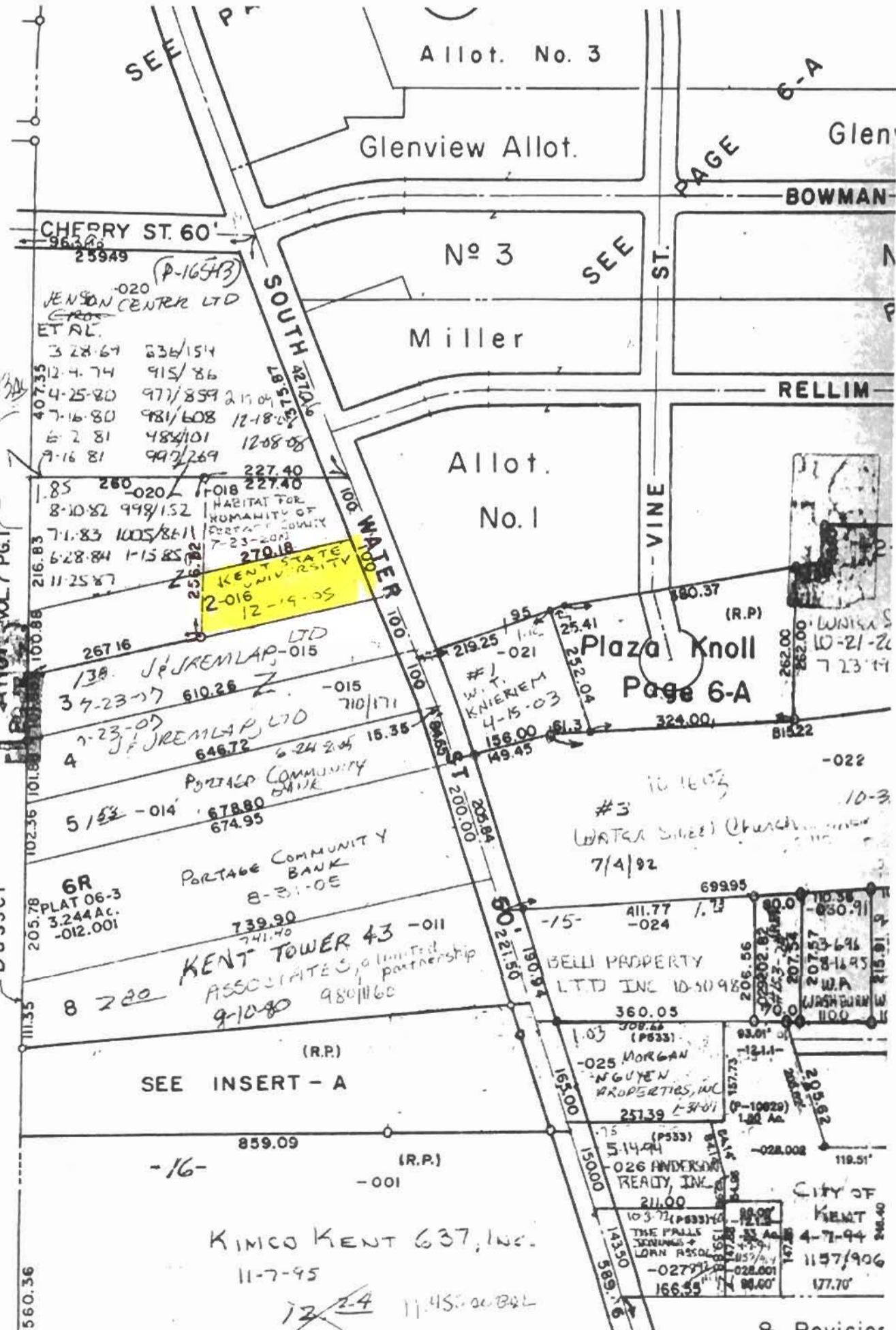


Jurisdictions



2006 Ortho Photos

- Red: Band\_1
- Green: Band\_2
- Blue: Band\_3



Total 16.6134  
(5.5244)  
lot 6

LOT 7

Dussey

CHERRY ST. 60'

25949  
JENSON CENTER LTD  
ET AL.

3 28-64 636/154  
12-4-74 915/86  
4-25-80 977/859 217/04  
7-16-80 981/608 12-18-04  
6-2-81 488/101 12-08-08  
7-16-81 997/269

1-85 280-020  
8-10-82 998/152  
7-1-83 1005/811  
6-28-84 1-15-85  
11-25-87  
270.18  
KENT STATE UNIVERSITY  
2-016  
12-19-05

267.16 LTD  
138 J. J. JREMLAP-015

3 7-23-07 610.26 Z -015  
7-23-07 J. J. JREMLAP LTD 710/171  
4 646.72 6-24-05 15.35

5 1-23-01 678.80  
674.95  
PORTAGE COMMUNITY BANK

6R PLAT 06-3  
3.244 Ac.  
-012.001  
8-31-05

739.90  
741.40  
8 2-20 KENT TOWER 43 -011  
ASSOCIATES, a limited partnership  
9-10-80 980/1160

(R.P.)  
SEE INSERT - A

859.09 (R.P.)  
-16- -001

KIMCO KENT 637, Inc.  
11-7-95

12-24 11.45 ac. 82L

Allot. No. 3

Glenview Allot.

No 3

Miller

Allot. No. 1

Plaza Knoll  
Page 6-A

#3  
WATER STREET Church  
7/4/92

BELLI PROPERTY LTD INC 10-30-98  
360.05

MORGAN NGUYEN PROPERTIES, INC  
257.39

ANDERSON READY, INC  
211.00

THE FALLS SERVICES & LOAN ASSOCIATION  
-027.77